

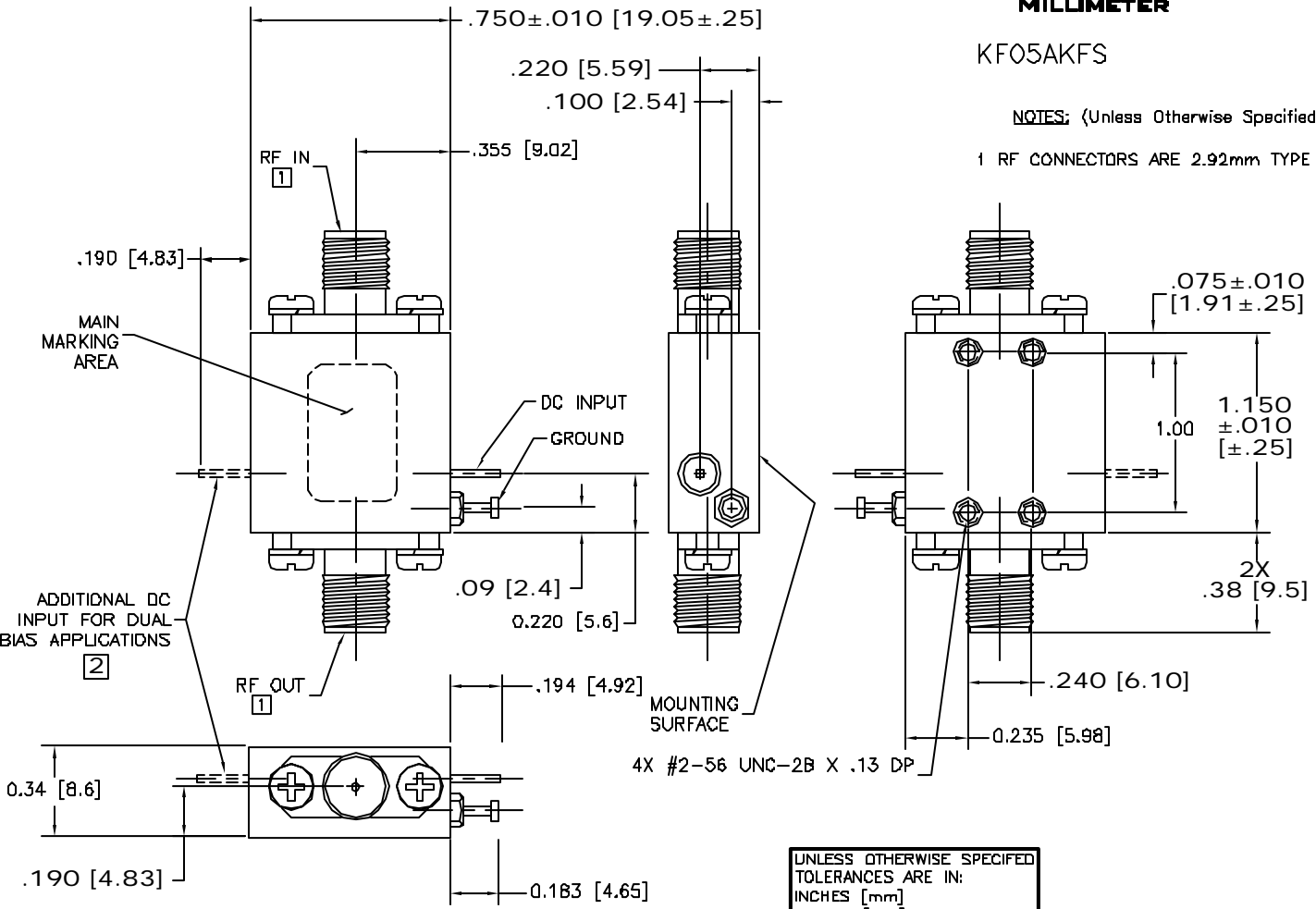


**NORDEN  
MILLIMETER**

KF05AKFS

NOTES: (Unless Otherwise Specified)

1 RF CONNECTORS ARE 2.92mm TYPE FEMALE.



UNLESS OTHERWISE SPECIFIED  
TOLERANCES ARE IN:  
INCHES [mm]  
XX±.02 [±.5]  
XXX±.005 [±.13]