

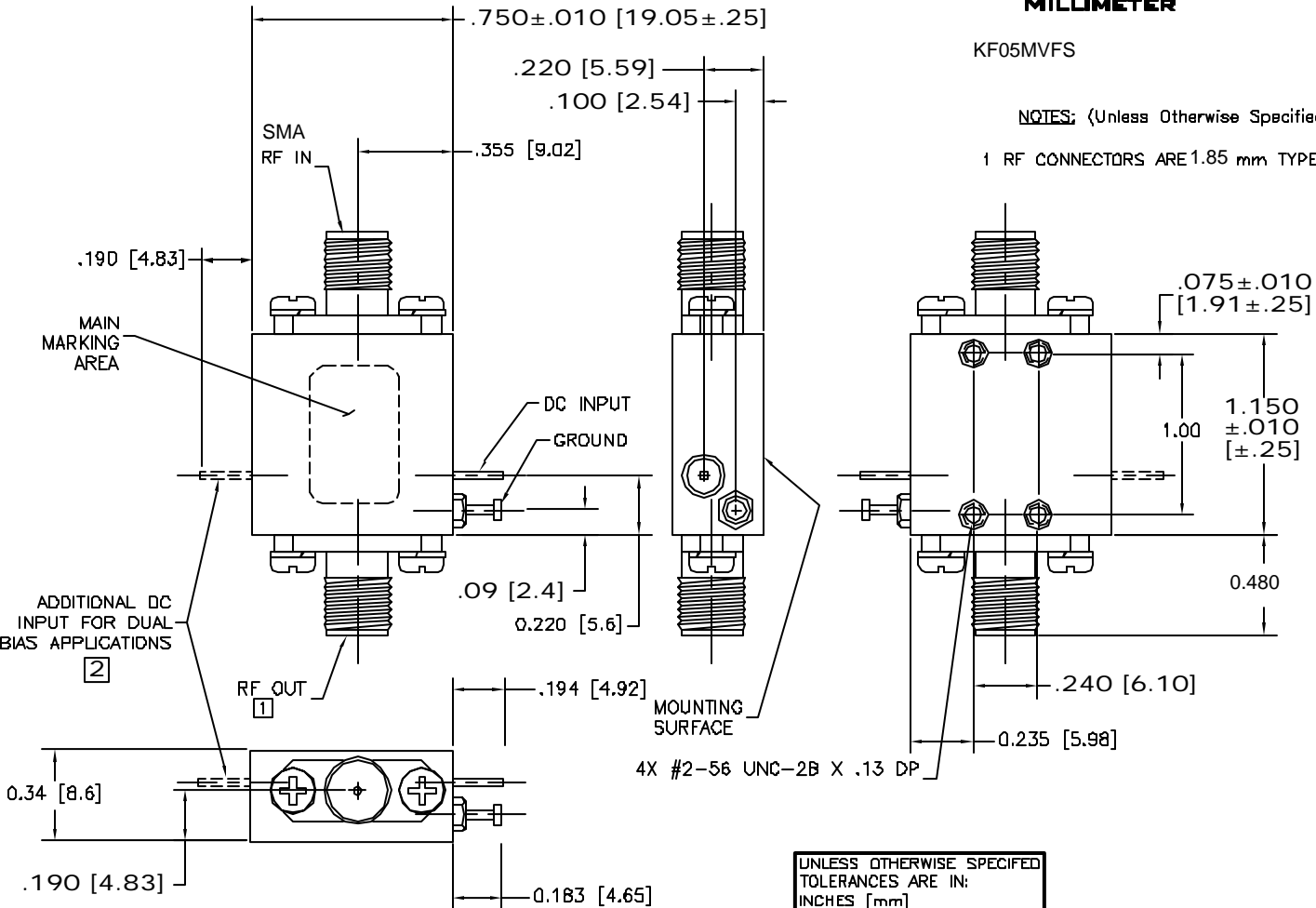


**NORDEN
MILLIMETER**

KF05MVFS

NOTES: (Unless Otherwise Specified)

1 RF CONNECTORS ARE 1.85 mm TYPE FEMALE.



UNLESS OTHERWISE SPECIFIED
TOLERANCES ARE IN:
INCHES [mm]
XX±.02 [±.5]
XXX±.005 [±.13]