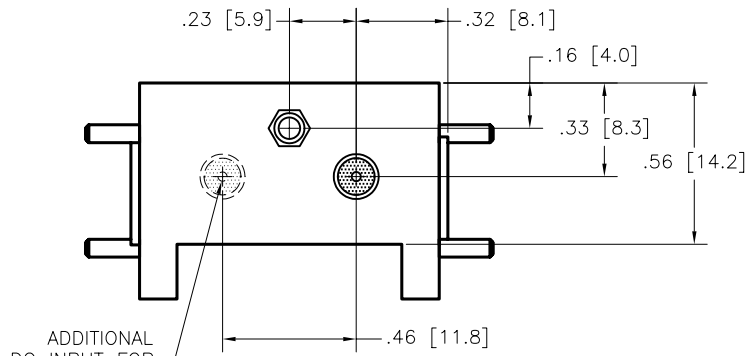


REVISIONS

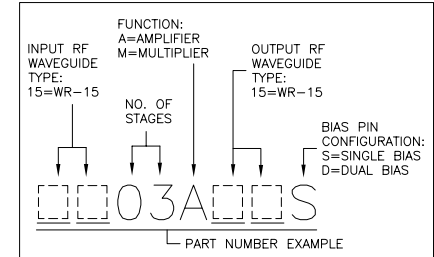
ZONE	REV	DESCRIPTION	DATE	APPROVED
	A	INITIAL RELEASE	4-10-06	JD



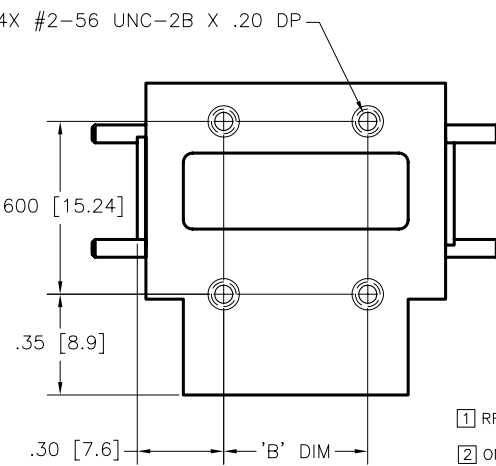
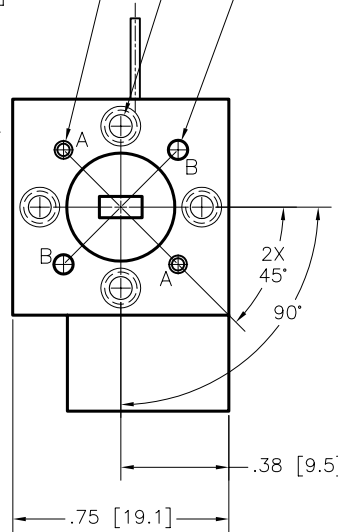
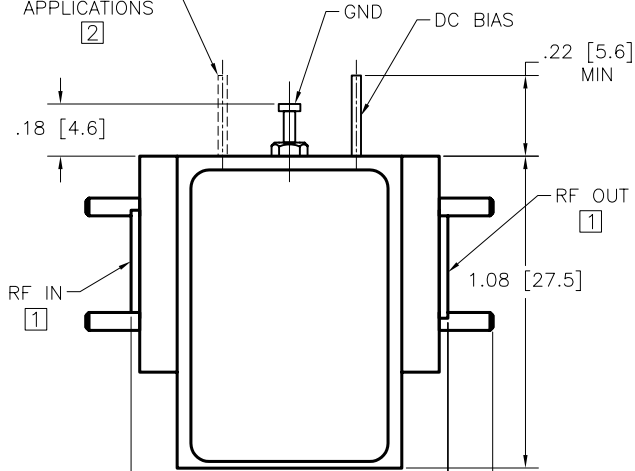
2X  $\phi$ .062 [ $\phi$ 1.57] PIN  
ON A  $\phi$ .562 B.C.,  
CODED 'A',  
BOTH SIDES

4X #4-40 UNC-2B X  
.140 DP, ON A  $\phi$ .562 B.C.,  
BOTH SIDES

2X  $\phi$ .068 [ $\phi$ 1.73]  
 $\phi$ .067 [ $\phi$ 1.70] X .165 DP,  
ON A  $\phi$ .562 B.C.,  
CODED 'B',  
BOTH SIDES



ADDITIONAL  
DC INPUT FOR  
DUAL BIAS  
APPLICATIONS  
[2]



PACKAGE#	DIM "A"	DIM "B"
1501_15_	1.100 [27.94]	.500 [12.70]
1502_15_	1.300 [33.02]	.700 [17.78]
1503_15_	1.500 [38.10]	.900 [22.86]
1504_15_	1.700 [43.18]	1.100 [27.94]
1505_15_	1.900 [48.26]	1.300 [33.02]
1506_15_	2.100 [53.34]	1.500 [38.10]
1507_15_	2.300 [58.42]	1.700 [43.18]
1508_15_	2.500 [63.50]	1.900 [48.26]
1509_15_	2.700 [68.58]	2.100 [53.34]
1510_15_	2.900 [73.66]	2.300 [58.42]
1511_15_	3.100 [78.74]	2.500 [63.50]
1512_15_	3.300 [83.82]	2.700 [68.58]
1513_15_	3.500 [88.90]	2.900 [73.66]
1514_15_	3.700 [93.98]	3.100 [78.74]
1515_15_	3.900 [99.06]	3.300 [83.82]

NOTES: (Unless Otherwise Specified)

- [1] RF CONNECTORS ARE WR-15 WITH UG 385/U FLANGE.
- [2] ONLY USED ON PACKAGE NUMBERS ENDING IN "D".

UNLESS OTHERWISE SPECIFIED  
TOLERANCES ARE IN:  
INCHES [mm]  
XX±.02 [±.5]  
XXX±.005 [±.13]

DIMENSIONS ARE IN INCHES,  
TOLERANCES ARE:  
FRACTIONS .XX± — DEGREES  
± — .XXX± — ±1°

MATERIAL:  
FINISH:

APPROVALS		DATE		 PLACERVILLE, CA 95667 OUTLINE, STANDARD WR-15 WAVEGUIDE, WITH UG-385/U FLANGE INPUT/OUTPUT			
DRAWN J. DARJES		4-4-06					
ENGR K. Robertson		4-10-06		SIZE	CAGE CODE	DWG NO.	REV
MANUFACT. DM Smith		4/10/06			1W6Q4	OL-01581	A
Q.A. M. Conley		4/10/06		SCALE			SHEET 1 OF 1